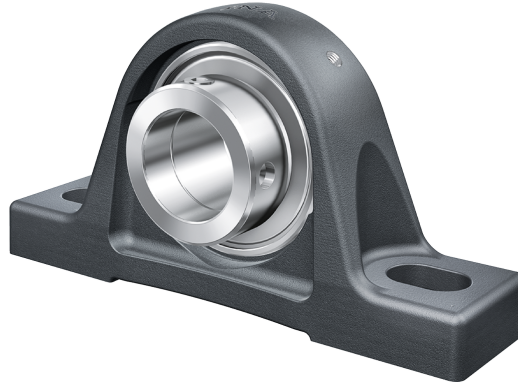


RASE35-XL-N INA

SKU: INARASE35-N



Extra afbeelding



Specificaties

designation	RASE35-XL-N
Boring diameter (mm)	35
Buitendiameter (mm)	163
Breedte (mm)	93
Gewicht (kg)	1.65
Omschrijving (EN)	Plummer block housing units RASE, cast iron housing, radial insert ball bearing with eccentric locking collar, R seals
EAN-code	4054372514364
Merk	INA
category1	Ball bearing units
endCategory	Pillow blocks
Boring diameter (mm)	35
Buitendiameter (mm)	163
Breedte (mm)	93

Gewicht (kg)	1.65
---------------------	------

Beschrijving

RASE35-XL-N INA Pillow blocks

Product URL

<https://aandrijftechniek.nl/product/rase35-xl-n-ina/>