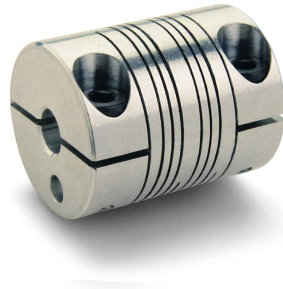
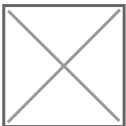


PCMR19-5-3-A Ruland Manufacturing Beam couplings Ruland Manufacturing

SKU: 610PCMR1953A



Extra afbeelding



Specificaties

Buitendiameter (inch)	0.75
Gewicht (kg)	0.0137
CouplingMaterial	Aluminum
noOfScrews	2
D2OuterDiameterOD	19.1
nmax(rpm)	6000
UNSPSCcode	31163003
boreB1Mm	5
boreB2Mm	3
lengthLInch	0.9
lengthLMm	22.9
MaterialSpecification	7075-T651 Bar
Bore1ShaftPenetrationMm	10.7
Bore2ShaftPenetrationMm	10.7
StaticTorqueNm	1.92

NonReversingTorqueNm	0.96
ReversingTorqueNm	0.48
TorsionalStiffnessDeg/Nm	2.27
AngularMisalignmentDeg	3
ParallelMisalignmentMm	0.2
AxialMotionMm	0.13
couplingBoreTolerance	+0.025 mm / -0.000 mm
couplingShaftTolerance	+0.000 mm / -0.013 mm
ScrewCapSize	M2.5
ScrewType	Alloy Steel
ScrewFinish	Black Oxide
SeatingTorqueNm	1.21
certifications	ISO-9001-2008 REACH ROHS2 Conflict Minerals
UPC	634529031520
TariffCode	8483.60.8000
Merk	Ruland Manufacturing

Beschrijving

PCMR19-5-3-A Ruland Manufacturing Beam couplings

Product URL

<https://aandrijftechniek.nl/product/pcmr19-5-3-a-ruland-manufacturing-beam-couplings-ruland-manufacturing/>