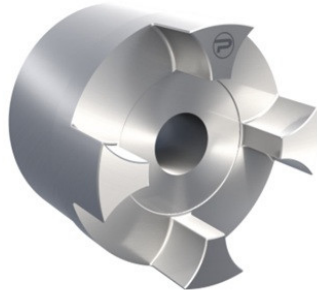


## PCJ75B Protorque

SKU: 6PROB75ONGGG



### Bijlagen

- [Document 1](#)

### Extra afbeelding



### Specificaties

Materiaal	Cast Iron
designation	PCJ75B
Gewicht (kg)	10.35
execution	Large hub
size	75
productType	Jaw coupling
Merk	Protorque

### Beschrijving

Curved Jaw Coupling, Size 75 Large Cast Iron Hub (GG25), Pilot Bore Protorque Elastic couplings

### Product URL

<https://aandrijftechniek.nl/product/pcj75b-protorque/>