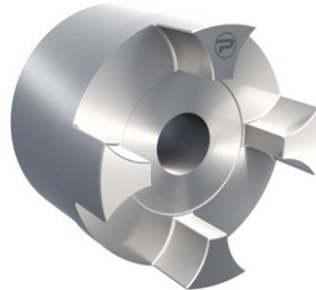


PCJ65B Protorque

SKU: 6PROB65ONGGG



Bijlagen

- [Document 1](#)

Extra afbeelding



Specificaties

Materiaal	Cast Iron
designation	PCJ65B
Gewicht (kg)	6.6
execution	Large hub
size	65
productType	Jaw coupling
Merk	Protorque

Beschrijving

Curved Jaw Coupling, Size 65 Large Cast Iron Hub (GG25), Pilot Bore Protorque Elastic couplings

Product URL

<https://aandrijftechniek.nl/product/pcj65b-protorque/>