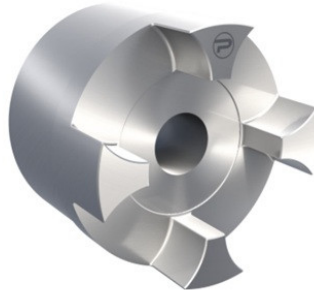


PCJ65A Protorque

SKU: 6PROA65ONGGG



Bijlagen

- [Document 1](#)

Extra afbeelding



Specificaties

Materiaal	Cast Iron
designation	PCJ65A
Gewicht (kg)	6.3
execution	Standard hub
size	65
productType	Jaw coupling
Merk	Protorque

Beschrijving

Curved Jaw Coupling, Size 65 Cast Iron Hub (GG25), Pilot Bore Protorque Elastic couplings

Product URL

<https://aandrijftechniek.nl/product/pcj65a-protorque/>