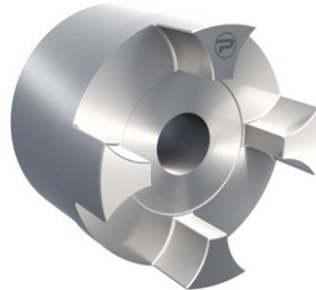


PCJ55A Protorque

SKU: 6PROA55ONGGG



Bijlagen

- [Document 1](#)

Extra afbeelding



Specificaties

Materiaal	Cast Iron
designation	PCJ55A
Gewicht (kg)	4.11
execution	Standard hub
size	55
productType	Jaw coupling
Merk	Protorque

Beschrijving

Curved Jaw Coupling, Size 55 Cast Iron Hub (GG25), Pilot Bore Protorque Elastic couplings

Product URL

<https://aandrijftechniek.nl/product/pcj55a-protorque/>