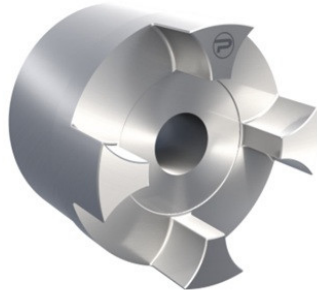


PCJ42B Protorque

SKU: 6PROB42ONGGG



Bijlagen

- [Document 1](#)

Extra afbeelding



Specificaties

Materiaal	Cast Iron
designation	PCJ42B
Gewicht (kg)	2.66
execution	Large hub
size	42
productType	Jaw coupling
Merk	Protorque

Beschrijving

Curved Jaw Coupling, Size 42 Large Cast Iron Hub (GG25), Pilot Bore Protorque Elastic couplings

Product URL

<https://aandrijftechniek.nl/product/pcj42b-protorque/>