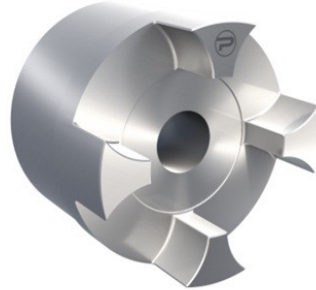


PCJ28B Protorque

SKU: 6PROB28ONGST



Bijlagen

- [Document 1](#)

Extra afbeelding



Specificaties

Materiaal	Cast Iron
designation	PCJ28B
Gewicht (kg)	0.75
execution	Large hub
size	28
productType	Jaw coupling
Merk	Protorque

Beschrijving

Curved Jaw Coupling, Size 28 Large Cast Iron Hub (GG25), Pilot Bore Protorque Elastic couplings

Product URL

<https://aandrijftechniek.nl/product/pcj28b-protorque/>