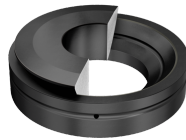


## GE40-AX INA

SKU: INAGE40-AX



### Specificaties

<b>designation</b>	GE40-AX
<b>Boring diameter (mm)</b>	40
<b>Buitendiameter (mm)</b>	105
<b>Breedte (mm)</b>	32
<b>Gewicht (kg)</b>	1.622
<b>Omschrijving (EN)</b>	Axial spherical plain bearing, requiring maintenance, sliding contact surface: steel/steel
<b>EAN-code</b>	4012802534634
<b>Merk</b>	INA
<b>Boring diameter (mm)</b>	40
<b>Buitendiameter (mm)</b>	105
<b>Breedte (mm)</b>	32
<b>Gewicht (kg)</b>	1.622

### Beschrijving

GE40-AX INA Angular contact spherical plain bearings

### Product URL

<https://aandrijftechniek.nl/product/ge40-ax-ina/>