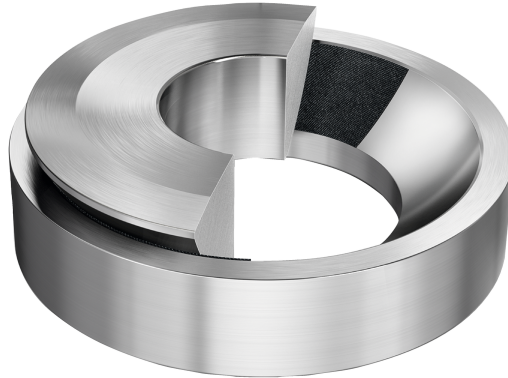


## GE100-AW-A INA

SKU: INAGE100-AW-A



### Specificaties

<b>designation</b>	GE100-AW-A
<b>Boring diameter (mm)</b>	100
<b>Buitendiameter (mm)</b>	210
<b>Breedte (mm)</b>	59
<b>Eenheden</b>	pc
<b>Gewicht (kg)</b>	10.76
<b>Omschrijving (EN)</b>	Axial spherical plain bearing, maintenance-free, DIN ISO 1224-3, shaft location washer curved surface with hard chromium coating, open design
<b>EAN-code</b>	4012802532838
<b>Merk</b>	INA
<b>Boring diameter (mm)</b>	100
<b>Buitendiameter (mm)</b>	210
<b>Breedte (mm)</b>	59
<b>Gewicht (kg)</b>	10.76

### Beschrijving

GE100-AW-A INA Angular contact spherical plain bearings

## **Product URL**

<https://aandrijftechniek.nl/product/ge100-aw-a-ina/>