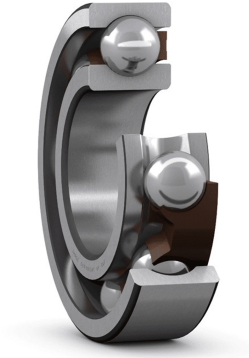


6306 ETN9/C3 SKF

SKU: SKF6306-ETN9/C3



Bijlagen

- [Document 1](#)

Specificaties

| | |
|------------------------|--------------------------------------|
| bearingLubrication | Un lubricated |
| seals | Open |
| clearance | C3 |
| accuracy | Class 6 (P6) |
| cageMaterial | Plastic |
| ringMaterial | Steel |
| rollingElementMaterial | Steel |
| designation | 6306 ETN9/C3 |
| Boring diameter (mm) | 30 |
| Buitendiameter (mm) | 72 |
| Breedte (mm) | 19 |
| bearingMass | 0.31 |
| Eenheden | pc |
| Gewicht (kg) | 0.31 |
| Merk | SKF |
| category1 | Deep groove ball bearings |
| endCategory | Single row deep groove ball bearings |

| | |
|-----------------------------|------|
| Boring diameter (mm) | 30 |
| Buitendiameter (mm) | 72 |
| Breedte (mm) | 19 |
| Gewicht (kg) | 0.31 |

Beschrijving

6306 ETN9/C3 SKF Single row deep groove ball bearings

Product URL

<https://aandrijftechniek.nl/product/6306-etn9-c3-skf/>