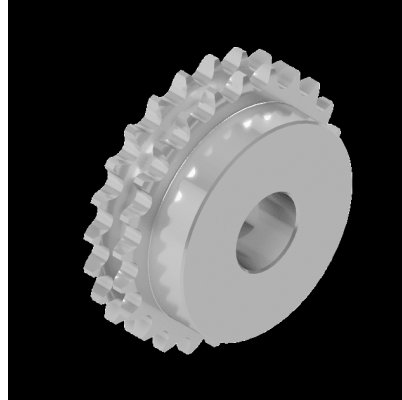


16B223 Neutral

SKU: 200KHD1611Z23



Specificaties

Kettingsontwerp	Duplex
Oppervlaktebehandeling	No
Materiaal	C45
Spoed (inch)	1"
Spoed (mm)	25.4
ISO-standaardmaat	ISO 606
designation	16B223
Boring diameter (mm)	
Eenheden	pc
numberOfTeethZ	23
toothWidthMM	47.7
pilotBoreDiameterMM	25
pitchCircleDiameterMM	186.53
tipCircleDiameterMM	198.1
Geharde tanden	Ja
Gewicht (kg)	10.8
weldedHub	Nee
taperBushSize	
hubDiamDnMM	130
lengthInclHubLnMM	70

toothWidthb1MM	15.8
SprocketType	Standard Induction hardened teeth
BEAArticleNumber	192380023
ISOstandardSize2	16B
brandType(extraAttributeForNeutralIdentifier)	Extended
Merk	Neutral
Materiaal	C45
Spoed (inch)	1"
Spoed (mm)	25.4
Boring diameter (mm)	
Geharde tanden	Ja
Gewicht (kg)	10.8

Beschrijving

ISO 606 Duplex Z 23, Standard Induction hardened teeth Neutral Sprockets

Product URL

<https://aandrijftechniek.nl/product/16b223-neutral-2/>